



Mane Stream eCurrent

Unbridled Possibilities for Children & Adults with Special Needs

August 2016

In This Issue

[Noticed something new at Mane Stream?](#)

[Volunteer Appreciation Party 10.9.16](#)

[Fall Horse Show 10.9.16](#)

[Save the Date: 2th Anniversary of EQUUS](#)

Have you noticed something different at Mane Stream? We've got a **NEW Executive Director!**



Trish Hegeman has jumped right in and is making a difference each and every day.

Happily, we can report that the staff enjoys her vibrant personality, wide variety of business experience, and her straightforward management style.

Remember to say hello the next time you are at the farm and until then, please keep reading for your chance to get to know what Trish brings to the s-table!

Trish Hegeman...

For the past 25 years Trish has worked with nonprofit organizations, both as a staff member and as a consultant, helping them secure the resources necessary to be successful. She has broad fundraising experience with a focus on individual giving, foundation and corporate relations, board development and annual campaigns.

Over her career she has worked with a wide variety of organizations including a children's hospital, a major NYC museum, an organic farm and environmental education program, a public radio station and most recently, she was the Associate Director of Development and Alumni at Far Hills Country Day School.

Trish has a Bachelor of Arts in Economics from Holy Cross College and a Masters of Arts in Visual Arts Administration from New York University. She has served on a number of boards of directors, including a term as President for Family Connections which provides education services to low income families.

She grew up on Long Island and rode horses as a teenager. She has lived in New York City, northern California and moved with her husband Rich and three children to Basking Ridge seven years ago. Most of her free time is spent cheering for her kids - either from the stands at a hockey rink or from



Adaptive Horsemanship & Equine Assisted Therapies

www.ManeStreamNJ.org
908.439.9636

Volunteer Corner



Orientations and Trainings

Orientation:
Thursday, **August 11th**
6:30pm-8:30pm

Training:
Thursday, **August 18th**
6:30pm-8:30pm

Orientation and Training:
Saturday, **August 20th**
10:00am-2:00pm

the audience at a dance performance.

**Also NEW to Mane Stream are Justin the pony & Buzz the horse!
Glamour shots coming soon!!**

Yummy Lunch and Lots of Awards Volunteer Appreciation Party: 10.9.16



...because YOU're a BIG deal!

We would like to invite all the Mane Stream Volunteers, their families, and all Mane Stream Participants to come share good times, laughs, and of course some yummy food!

This is a special time for the Board of Directors, Staff and Participants to recognize and celebrate the tremendous efforts of the Mane Stream volunteers who graciously donate over

10,000 hrs each year.

Please make a day of it! Come in the morning to watch the adaptive riders compete in the Fall Horse Show, then enjoy a delicious lunch at noon; the day concludes with the presentation of ALL awards for riders and volunteers at 2pm.

The [Nancy Penick McGarry Memorial Horsemanship Award](#) is Now Open to Volunteers

Tell us how Mane Stream has made an impact on your life in 500 words or less!

Send your story to jen@manestreamni.org
Story Deadline October 1st

Interested in helping with this event? We need people to help in a variety of ways from set-up, registration, merchandise, grooming, leading, sidewalking, ribbons, and more! Contact jen@manestreamni.org

Horse Show & Volunteer Appreciation Sponsors are still needed to ensure this event a success. Please consider one of the 9 different sponsorship levels available. We are also looking for gifts-in-kind for items like food & drinks or items which can be used for prizes like gift cards, movie tickets, candy, etc. [Act Now](#)

Calling ALL Mane Stream Adaptive Riders! Fall Horse Show: 10.9.16



**Show off your riding skills, have fun and...
Show off your LOVE for Mane Stream.**

Entry Fee minimum \$50/rider, which includes 2 classes to be judged by a guest judge. Riders are also encouraged to raise additional funds to support Mane Stream.

In addition to Champion & Reserve ribbons for adult and child for morning and afternoon divisions there will be several additional awards given during this year's show.

The Abby Clay Rutgers Memorial Award
(High Point Independent Rider)

The Gracie Memorial Award
(High Point Junior Rider under 21)

[The Nancy Penick McGarry Memorial Horsemanship Award](#)

This award is now open to both riders & volunteers who tell the story of how Mane Stream has made an impact on their life in 500 words or less.

Please RSVP Now!
volunteer@manestreamni.org

Volunteering in the Fall

Adaptive Riding Session 5

Mon-Thu from 3-6pm
Sat 8:30-12 or 12-3:00

Fall Therapy

Mon 3-5:30pm or 5-8pm
Tue 4:15-8pm
Wed 3-5pm or 5-8pm
Thu 1-4:30pm

Special Programs

Horses for Healing
Matheny

Please RSVP Now!
volunteer@manestreamni.org

Tack Donations!



**Do you have any
tack that you
no longer need?**

If so, Mane Stream is accepting donations for our Fall Tack Sale on Oct. 8th.

We are accepting everything from saddles to anything horse related to benefit our equine assisted therapy and adaptive riding programs.

If you have any questions, please contact
jen@manestreamni.org

GET READY FOR FALL

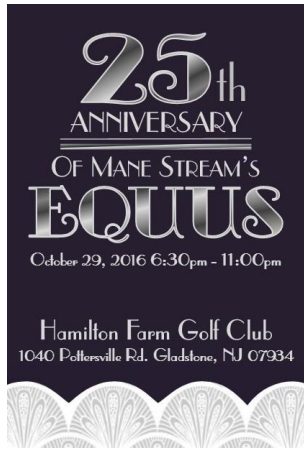
Sale Ends 8.22.16



(story deadline October 1st)

Find out more about the event including [registration forms & donation forms](#).

Save the Date for the 25th Anniversary of... EQUUS: 10.29.16



Equus is Mane Stream's biggest fundraiser and will be held on October 29, 2016 from 6:30-11:00pm at Hamilton Farm Golf Club in Gladstone.

The evening features a gourmet dinner, open bar, live band, dancing, and live and silent auctions with many exciting prizes

Please consider one of the following ways to support the mission.

- Purchase a [Sponsorship](#)
- Place an [Ad in the Gala Program](#)
- Attend the Event - Tickets available in Sept.

Check out last year's [EQUUS gallery](#) and [learn more](#) about this glamorous event.

Choose from a full line of Mane Stream Logowear.

There is something for everyone and plenty for those who volunteer several times a week (you know who you are!)

Great for Holiday Gifts!
(Only 142 days before Christmas)

START SHOPPING NOW

**Sale Ends 8.22.16
Don't miss out!**

[Join Our Mailing List!](#)

**ONLY
\$5**

Go Green!

Well, blue & black actually.
Donate \$5 to Mane Stream and you'll receive a stylish reusable grocery bag.
**Help spread the word about Mane Stream!
Stop by the office and pick one up today.**



Mane Stream, PO Box 305, 83 Old Turnpike Road, Oldwick, NJ 08858

[SafeUnsubscribe™ {recipient's email}](#)

[Forward this email](#) | [Update Profile](#) | [About our service provider](#)

Sent by louisa@manestreamnj.org in collaboration with

Constant Contact®

Try it free today