



The Mane Stream eCurrent

Unbridled Possibilities for Children & Adults with Special Needs

August 2023



Seeking Participants for Horses for Healing

PLEASE SHARE THE NEWS...SIGN-UPS NOW OPEN! The Fall Sessions of Horses for Healing (H4H) for those impacted by Cancer and Parkinson's Disease start Monday, September 25th. Both programs will run on Mondays: H4H Cancer from 11am-12pm and H4H PD from 1-2pm. Each group will ride for 6 concurrent Mondays through October 30th under the instruction and guidance of PATH Intl. Certified Registered Instructor, Kelly Champion. [START THE PROCESS](#)



Oh Snap! We Love Ponies!

Welcome Snappy! Participants for our therapy program come in all ages, and for some of our youngest clients, we needed another pony. Our newest and smallest member of the herd is Land's End



Grab Your Horse Show T-shirt!

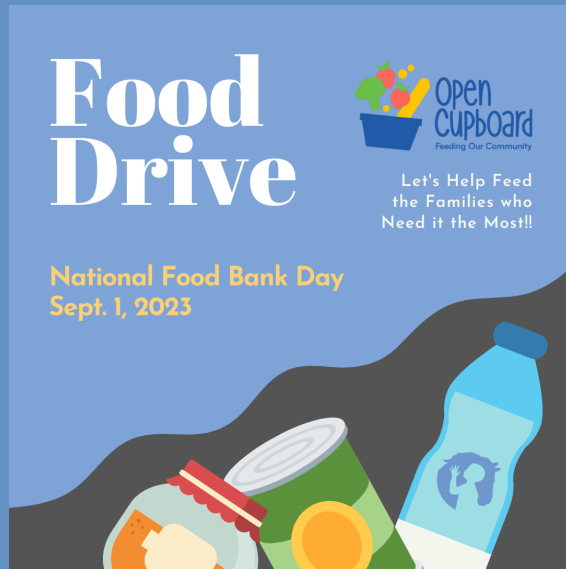
Don't miss out on the 2023 Horse Show Long Sleeve T-shirt! Only \$20 for this super soft Bella & Canvas shirt in YOUTH and ADULT sizes. We've got you covered so order yours before Sept. 6th!

Snapdragon, or Snappy. Who donated Snappy?

REMEMBER...Click on the below link and then click on "ITEMS" on the top left menu.

KEEP READING

PURCHASE ONLINE



Help Us with the Food Drive

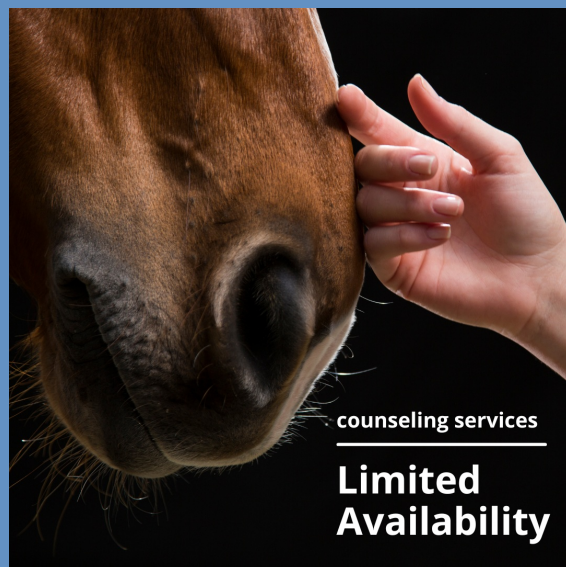
H4H Parkinson's Results

In honor of National Food Bank Day (Sept. 1st), Mane Stream is collecting non-perishable food items, personal care products, and paper goods to benefit [Open Cupboard Food Pantry](#) in Clinton. Drive will last through August 31. Please consider helping us help others!

"I cannot thank you enough! Managing Parkinson's on a daily basis is tremendously challenging both emotionally and physically. When we are diagnosed, we are told to 'live life' as fully as possible for as long as we are able. Your program is the kind of gem that I have been seeking. The respectfully supportive environment created by Kelly and the volunteers was perfectly challenging, uplifting and immensely joyful! I am very excited to continue riding in the Fall. It's truly the highlight of my year." - Wendy

Donation bin for items located in our lobby during normal working hours. **THANKS IN ADVANCE!**

READ MORE



Counseling Services Offered

VERY LIMITED SPOTS AVAILABLE on Thursdays, late afternoons with our mental health provider, Lori Rockmore Psy. D. Lori specializes in evidence-based cognitive-behavioral treatment. All work is done on the ground with no mounted activities. [TELL US YOU'RE INTERESTED](#)

Donate Your Old Jewelry

Help the Matheny Educational and Medical Center Thrift Shop with Your Jewelry Donation. Are you tired of your jewelry box overflowing with pieces you no longer wear? Well, now is the perfect time to do some decluttering and make a positive impact. The Matheny Educational and Medical Center's thrift shop is in desperate need of jewelry donations to support their mission. **DROP OFF AT MANE STREAM**

UPCOMING EVENTS



Sign Up for the Horse Show - October 1

Calling ALL Riders, Campers, and Volunteers!

It's time to show your stuff...and have FUN! Entry Fee minimum \$70/rider, which includes 2 classes to be judged by a guest judge with Instructors creating class and horse assignments (registration deadline September 8th). All riders are encouraged to raise additional funds to support Mane Stream. [REGISTER NOW](#)



A Night of Intrigue and Elegance

Join us at Hamilton Farm Golf Club on



Donate Horse-Related Items

It really does give back! Mane Stream

October 28th for the Mane Stream Masquerade! This highly anticipated evening promises to captivate your senses while supporting a noble cause. This year's live auction once again promises excitement and friendly competition, as spirited bidding wars unfold for unique and one-of-a-kind trips, items, and experiences. [VIEW EVENT WEBSITE](#)

accepts horse-related donated items ALL year round. Drop-off new or used bridles, saddles, blankets, tack boxes as well as outgrown boots, breeches, jackets, and any horse-related models or knick-knacks.

[EVENT DETAILS](#)

VOLUNTEER ARENA



All Hands On Deck for Camp!

Only three weeks left and we really need your help.

It's tons of fun! Help provide the best experience for our campers of all abilities! You will assist with all aspects of camp, including horsemanship skills, riding lessons, horse-related games, and crafts. There are still 3 weeks left. Each week runs M-F from 8:15-12:45. Let us know what days you are available. [LET US KNOW](#)



Welcome NEW Volunteers

Another three volunteers (HANNAH CASTIGLIONE, PALMA SCHWAB, and TARA LOIACONO) completed their hands-on training in July. They are excited to help



Become a Volunteer!

Ask a friend or co-worker to join the team. You know how rewarding volunteering at Mane Stream is so share the news! Getting involved is easy. Every other WEDNESDAY

with camp and any other Mane Stream programs that their busy schedules allow.

Remember to introduce yourself when you see any new faces in the barn during your next volunteer shift.

at 3:30pm we have online orientations. After that, sign-up for one of the hands-on training sessions.

Online Orientations: 8/16 and 8/30
Hands On Training Date: TBD (usually from 5:30-7:00pm) Please wear closed-toed shoes and clothing that you won't mind getting dirty!

[SIGN UP TODAY](#)

An advertisement for Ariat boots. The background is a light blue with a hexagonal pattern. In the center, the word "CHAMPIONS" is written in large, bold, black letters. Below it, in smaller text, is "The EQUUS Foundation Equine Service Program". Underneath that, it says "Sponsored By" followed by the Ariat logo (a shield with a biohazard symbol) and the word "ARIAT" in large, bold, black letters. On either side of the text, there are several different styles of Ariat boots, including tall black riding boots, brown chukka boots, and brown work boots. At the bottom of the image, the text "Win a \$270 Ariat Gift Certificate!" is written in white on a dark blue background.

CHAMPIONS
The EQUUS Foundation Equine Service Program
Sponsored By
 **ARIAT**[®]

Win a \$270 Ariat Gift Certificate!

SIGN UP with the Equus Foundation as a Mane Stream Volunteer for the chance to win rewards for you AND for Mane Stream! Each quarter, volunteers have the chance to win a \$270 Ariat Gift Certificate, and the more volunteers that sign up, the higher the chance of Mane Stream being selected to receive a yearly grant! **BECOME A CHAMPION**

MANE STREAM

PO Box 305 (83 Old Turnpike Rd.)
Oldwick, NJ 08858
Phone: 908.439.9636

Keep in Touch!



Mane Stream | PO Box 305, 83 Old Turnpike Road, Oldwick, NJ 08858

[Unsubscribe louisa@manestreamnj.org](mailto:louisa@manestreamnj.org)

[Update Profile](#) | [Constant Contact Data Notice](#)

Sent by louisa@manestreamnj.org powered by



Try email marketing for free today!